

1N4148WS

■ Switching Diodes

■ Features

- For surface mounted applications
- Glass Passivated Chip Junction
- Fast reverse recovery time
- Ideal for automated placement



■ Simplified outline(SOD-323FL)

Top View

■ Absolute Maximum Ratings Ta = 25°C

Parameter	Symbols	1N4148WS	Units
Maximum Repetitive Peak Reverse Voltage	V_{RRM}	100	V
Maximum RMS voltage	V_{RMS}	75	V
Continuous Forward Current	I_F	300	mA
Non-repetitive Peak Forward Surge Current at 1ms	I_{FSM}	4	A
Total Power Dissipation	P_{tot}	400	mW
Operating and Storage Temperature Range	T_j, T_{stg}	-55 ~ +150	°C

■ Electrical Characteristics Ta = 25°C

Parameter	Symbols	1N4148WS	Units
Reverse Breakdown Voltage at $I_R=1\mu A$	$V_{(BR)R}$	75	V
Maximum Forward Voltage at 1 mA at 10 mA at 50 mA at 150 mA	V_F	0.715 0.855 1.00 1.25	V
Peak Reverse Current at $V_R=20V$ $T_j=25^\circ C$ at $V_R=75V$ $T_j=25^\circ C$ at $V_R=25V$ $T_j=150^\circ C$ at $V_R=75V$ $T_j=150^\circ C$	I_R	0.025 1 30 50	μA
Typical Junction Capacitance	C_j	5	pF
Maximum Reverse Recovery Time ⁽¹⁾	t_{rr} Typical	8	ns

(1) Measured with $I_F = 0.5 A, I_R = 1 A, I_{rr} = 0.25 A$

1N4148WS

Fig.1 Forward Current Derating Curve

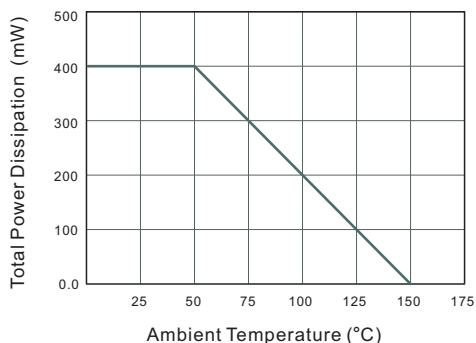


Fig.2 Typical Reverse Characteristics

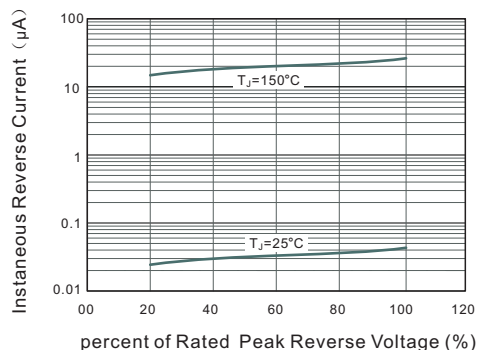


Fig.3 Typical Instaneous Forward Characteristics

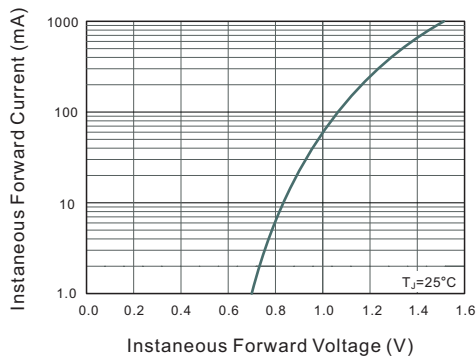
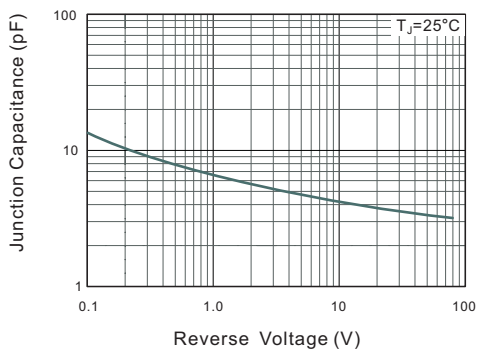
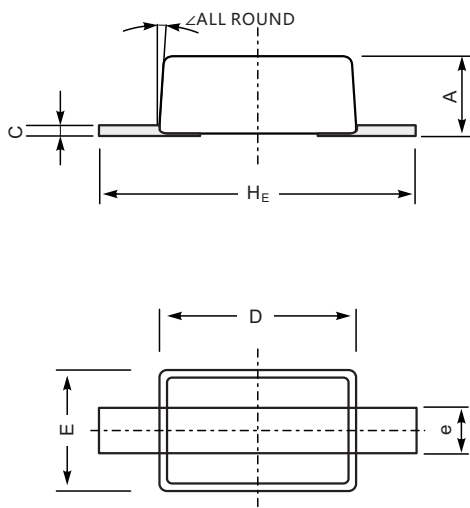


Fig.4 Typical Junction Capacitance



1N4148WS

■ SOD-323FL



UNIT		A	C	D	E	e	H _E	∠
mm	max	1.0	0.25	1.8	1.35	0.4	2.7	8°
	min	0.8	0.05	1.6	1.15	0.25	2.3	
mil	max	39	9.8	71	53	18	106	
	min	31	2.0	63	45	10	91	

The recommended mounting pad size

