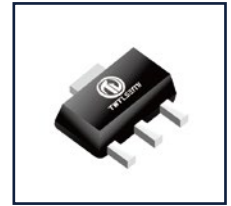


Features

- NPN Complements to BCX54
- Low Voltage
- High Current



SOT-89-3L

Absolute Maximum Ratings (TA=25°C)

Symbol	Parameter	Value	Unit
V _{CB0}	Collector-Base Voltage	-45	V
V _{CE0}	Collector-Emitter Voltage	-45	V
V _{EBO}	Emitter-Base Voltage	-5	V
I _c	Collector Current -Continuous	-1	A
P _c	Collector Power Dissipation	500	mW
R _{θJA}	Thermal Resistance From Junction To Ambient	250	°C/W
T _J , T _{stg}	Operation Junction And Storage Temperature Range	-55 ~ +150	°C

Electrical Characteristics (TA=25°C unless otherwise specified)

Symbol	Parameter	Test conditions	Min	Typ	Max	Unit
V _{(BR)CBO}	Collector-base breakdown voltage	I _c =-100μA, I _E =0	-45			V
V _{(BR)CEO}	Collector-emitter breakdown voltage	I _c =-10mA, I _B =0	-45			V
V _{(BR)EBO}	Emitter-base breakdown voltage	I _E =-100μA, I _c =0	-5			V
I _{CBO}	Collector cut-off current	V _{CB} =-30V, I _E =0			-0.1	μA
I _{EBO}	Emitter cut-off current	V _{EB} =-5V, I _c =0			-0.1	μA
h _{FE(1)}	DC current gain	V _{CE} =-2V, I _c =-5mA	63			
h _{FE(2)}		V _{CE} =-2V, I _c =-150mA	63		250	
h _{FE(3)}		V _{CE} =-2V, I _c =-0.5A	40			
V _{CE(sat)}	Collector-emitter saturation voltage	I _c =-0.5A, I _B =-50mA			-0.5	V
V _{BE}	Base -emitter voltage	V _{CE} =-2V, I _c =-0.5A			-1	V
f _T	Transition frequency	V _{CE} =-5V, I _c =-10mA, f=100MHz		50		MHz

Ordering information

Product ID	Pack	Naming rule	Marking	hFE(1)	Qty(PCS)
BCX51-16	SOT-89-3L	<div style="border: 1px solid black; padding: 5px; display: inline-block;"> BCX51-16 </div> <small>产品名称 product name</small>	AD	100-250	1000

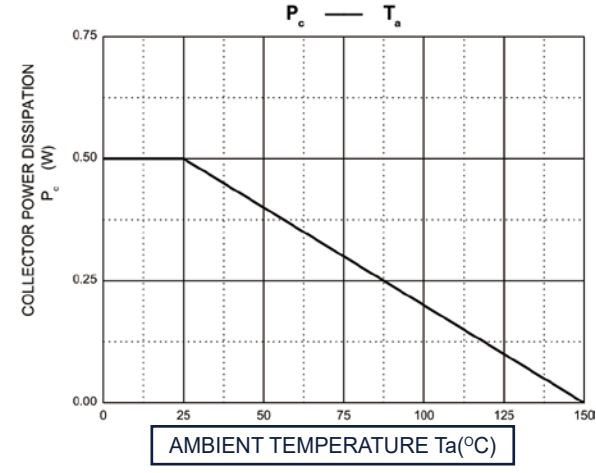
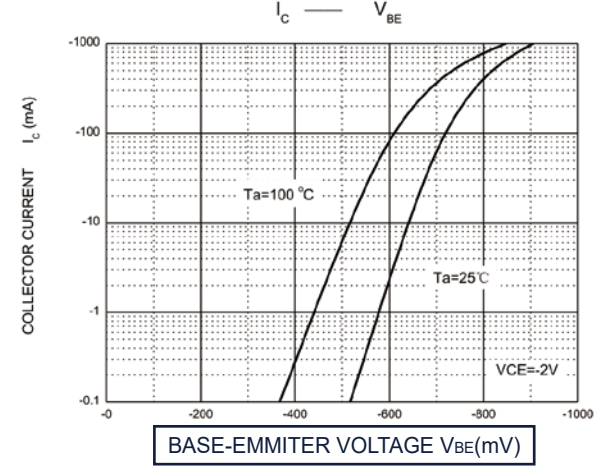
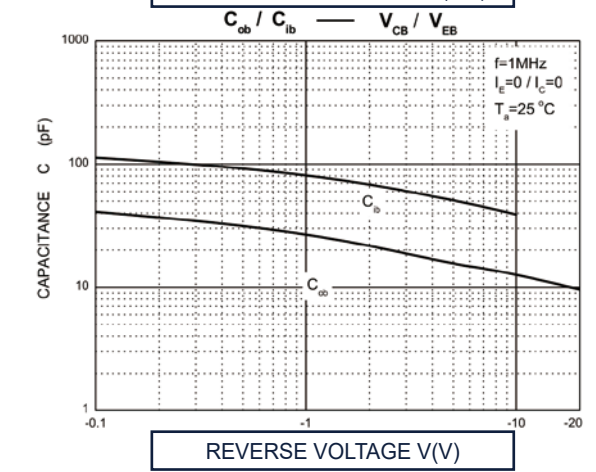
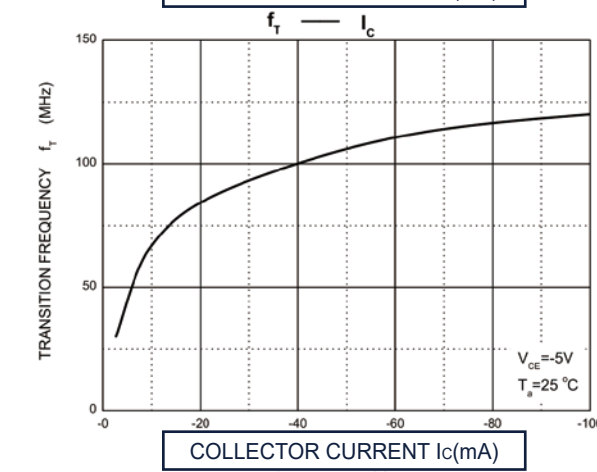
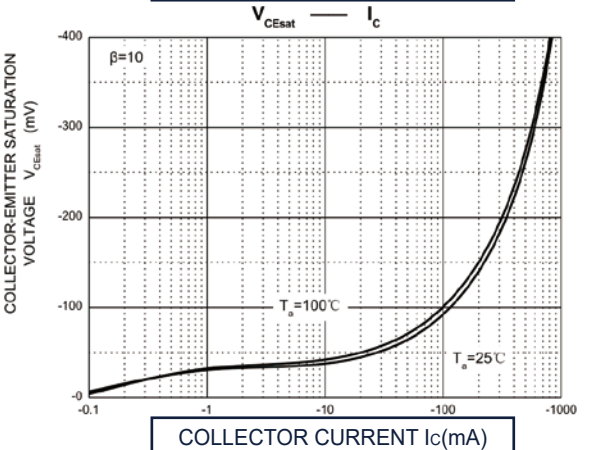
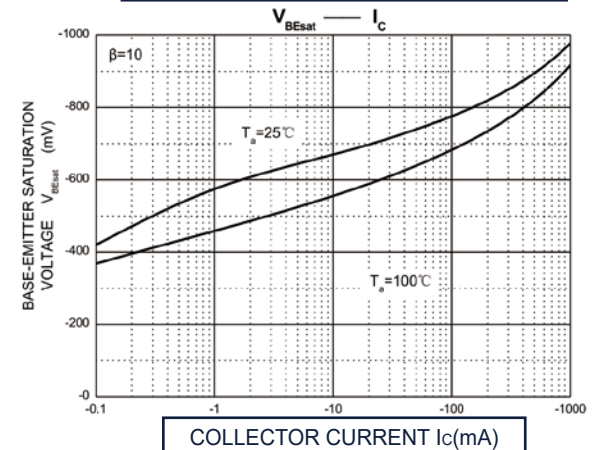
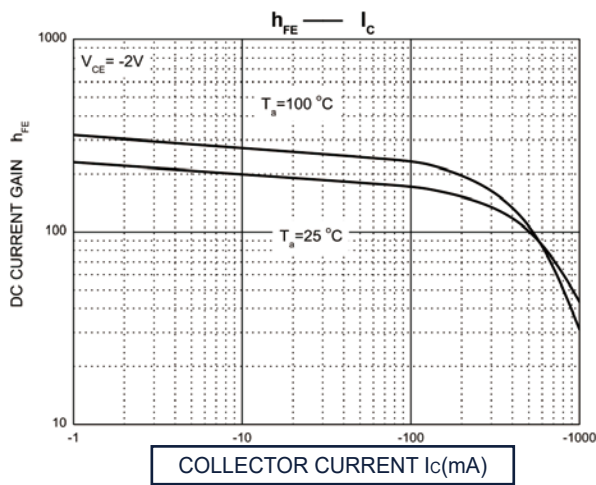
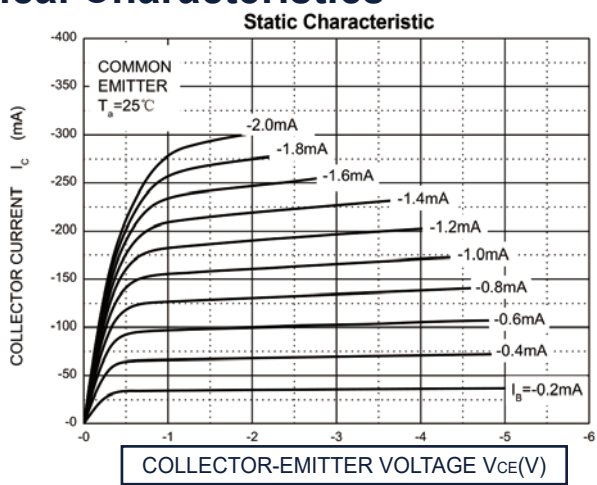


TWTLSEMI

TL-BCX51-16

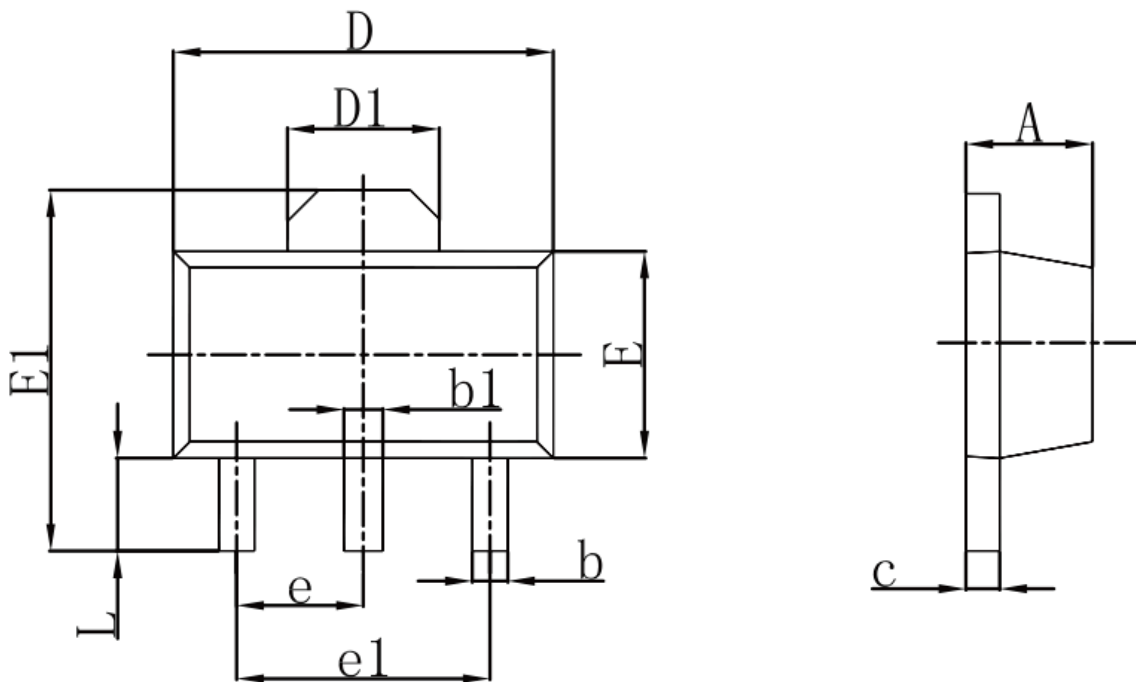
SOT-89-3L Plastic-Encapsulate Transistors (PNP)

Typical Characteristics





SOT-89-3L Package Outline Dimensions



Symbol	Dimensions in Millimeters		Dimensions In Inches	
	Min	Max	Min	Max
A	1.400	1.600	0.055	0.063
b	0.320	0.520	0.013	0.020
b1	0.400	0.580	0.016	0.023
c	0.350	0.440	0.014	0.017
D	4.400	4.600	0.173	0.181
D1	1.550 REF.		0.061 REF.	
E	2.300	2.600	0.091	0.102
E1	3.940	4.250	0.155	0.167
e	1.500 TYP.		0.060 TYP.	
e1	3.000 TYP.		0.118 TYP.	
L	0.900	1.200	0.035	0.047